

About the Reliability Upgrade for Southern Colorado

**Telephone Town Hall Meeting for Southern Colorado Customers
July 9, 2019**



RELIABILITY UPGRADE
For Southern Colorado

Additional Resources



If disconnected, dial (855) 756-7520 ext. 49279



**With questions, email
BHEReliabilityUpgrade@blackhillscorp.com**



**For more information, visit
www.reliabilityupgradesoutherncolorado.com**

Meeting Objectives

- ✔ Continue customer engagement efforts
- ✔ Share key aspects of the proposed Reliability Upgrade project, highlighting the transmission line route and substation locations
- ✔ Answer questions and listen to feedback

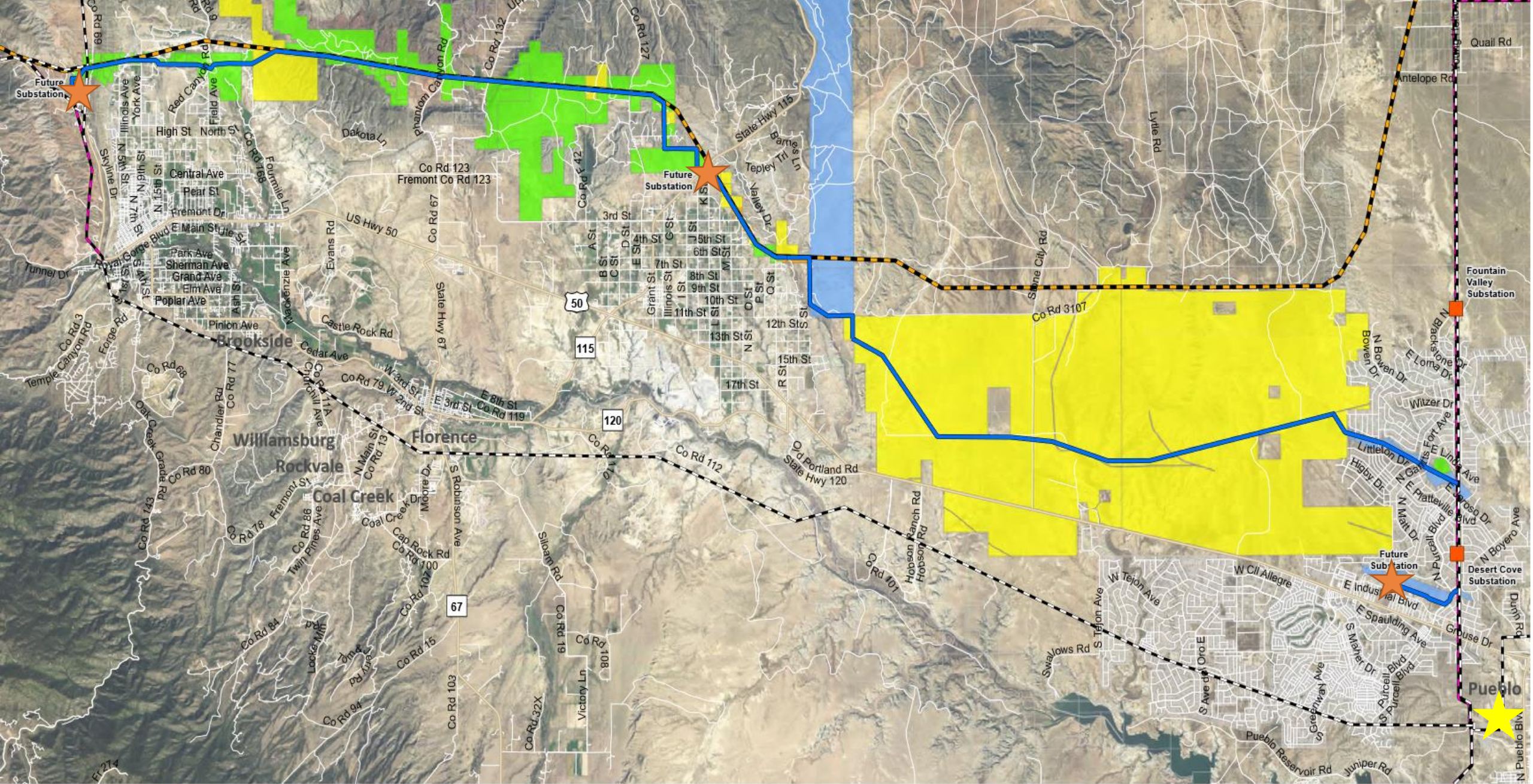
About the Reliability Upgrade



- **39-mile single circuit 115-kilovolt transmission line through Fremont and Pueblo Counties**
- **Transmission lines carry electricity from generation substations to distribution substations**

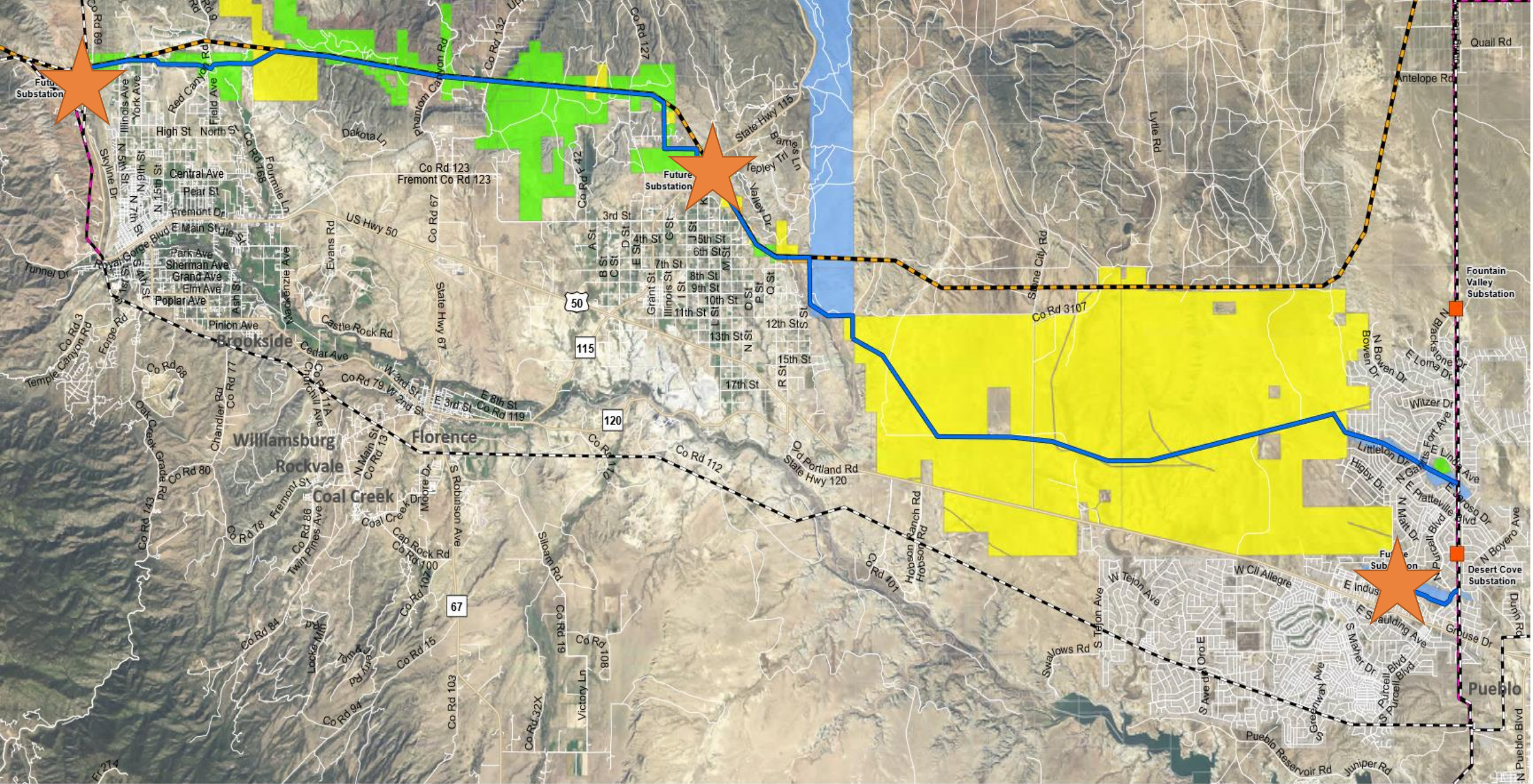


- **3 new substations in Cañon City, Penrose and Pueblo West**
- **Substations lower and then transfer voltage to distribution lines, ensuring homes and businesses are powered for day-to-day-life**

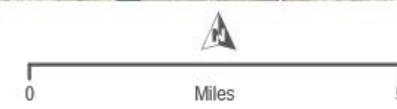


■ Easement Signed	■ Opposes Offer	■ Substation	- - - Undetermined Company	— Highway	★ Future Substation	★ Existing West Station in Pueblo
— Pending Offer	— Access Denied	— Public Service Co of Colorado	— Western Area Power Administration	□ Parcel Boundary		
■ Offer Presented to Owner	— Preferred Route					



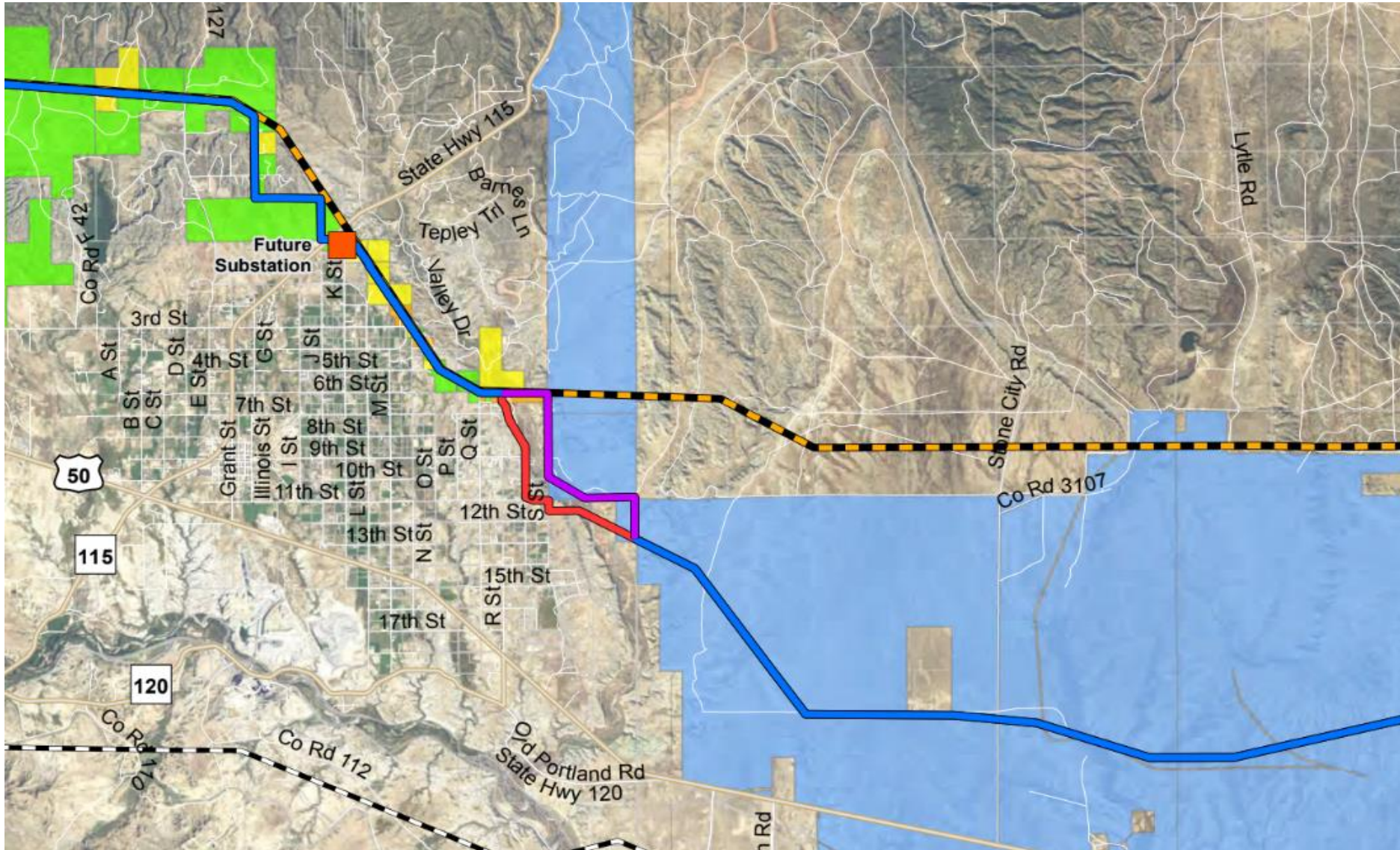


- | | | | | | |
|--|---|--|--|---|---|
| ■ Easement Signed | ■ Opposes Offer | ■ Substation | Undetermined Company | Highway | ★ Future Substation |
| ■ Pending Offer | ■ Access Denied | Public Service Co of Colorado | Western Area Power Administration | Parcel Boundary | |
| ■ Offer Presented to Owner | ■ Preferred Route | | | | |



Frequently Asked Questions

Has Black Hills adjusted plans based on customer feedback?



Red Line:
Originally
proposed route in
previous 1041
Application

Purple Line:
Adjustment north
of Penrose,
through Fort
Carson

Why not underground the transmission lines?

- **Black Hills conducted an in-depth engineering cost study to determine the cost and feasibility of undergrounding the line**
- **Undergrounding the line would be seven times more expensive for all customers, not just those directly benefiting from the upgrade**
- **Digging underground can have unintended impacts that disturb nearby soil and habitats**

What about safety?

- **Safety is our top priority**
- **Transmission line and substations will be built with safety in mind and monitored/inspected regularly**
- **Our linemen are trained in fire safety and on our major event and incident response plans**



THANK YOU!

A landscape photograph showing a series of wooden utility poles with power lines stretching across a field of green shrubs under a cloudy sky. The poles are arranged in a line, receding into the distance. The ground is a mix of brown soil and green vegetation. The sky is blue with scattered white clouds.

To ask a question, please press “zero” on your telephone key pad at any time.

For more information,

- email BHEReliabilityUpgrade@blackhillscorp.com**
- visit www.reliabilityupgradesoutherncolorado.com**